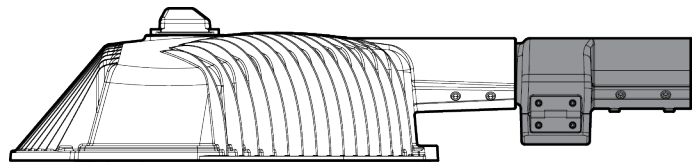
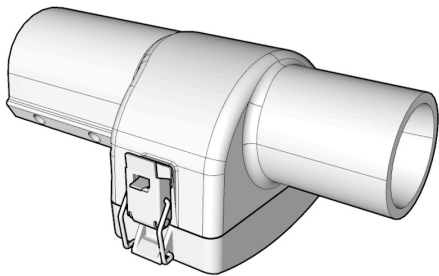


Control Specification (Optional)

Wireless Control	
	15 Vdc
	0.3 W (@15Vdc)
	2.4 GHz – IEEE 802.15.4 (Compatible)
	Mesh
	Max. +8 dBm (Typ. 6 dBm)
	250 kbps
	128 bit AES Encryption Algorithms
	PWM, 0 – 10 Vdc
	Omni Type, 2 dBi
	5 Vdc (MAX. 6 Vdc)
	40 mW (@5Vdc)
	40 – 160 fc (Default : 36.5 fc) / 400 – 1,600 lx (Default : 400 lx)
	DC level
	Up to 15M (Horizontal : 12M / Vertical : 6M)
	1 Min ~ 1 Hour (Default : 15 Min)

Junction Box (Optional)▯



* Supplied accessory for UL product▯

Ordering Information

Order Code Usage : MT130-A3S50ZPMHJ

000	-	0	00	00	0	000	0
Power Consumption		Input Voltage	Distribution Type	CCT (K)	Control System	Installation Type	Junction Box
=100W ▯ =130W ▯ =150W ▯ =180W		=100~277V) =100~240V ▯ =347~480V	=Type III-S	=4000K ▯5000 K ▯ =5700K	=Daylight ▯=Occupancy ▯=Occupancy + ZigBee ▯=Daylight + ZigBee ▯=Daylight + Occupancy + Zigbee ▯=ZigBee 5=None	=Pole Mount Horizontal	=Junction Box 5=None

PLANLED INC

1800 S 341st PL. Federal Way WA 98003

Tel : 866-552-5529 / E-Mail : info@planled.com / www.planled.com

The information in this document is subject to change without notice. / Document Revision V ▯ 2015.0 ▯